

**WARNING!!**

**IT IS THE INSTALLER'S  
RESPONSIBILITY  
TO VERIFY ALL COMPONENTS,  
BEFORE START ANY PART  
OF THE SNORKEL INSTALLATION.**

**CHECK TEMPLATE AGAINST  
SNORKEL BODY**



Bearthmach Limited, Bearmach House,  
Unit 8, Pantglas Industrial Estate,  
Bedwas, Caerphilly, CF83 8GE  
t: +44 (0)29 20 856 550  
f: +44 (0)29 20 865 586  
w: [www.bearthmach.com](http://www.bearthmach.com)

# **BA2129A**

SNORKEL LAND ROVER DISCOVERY 3/ 2.7L TDV6 SE

Fitment to: Right hand side  
Fitting time: Approximately 180 minutes  
Tools required: Air hacksaw  
Step drill  
Sikaflex 227 adhesive sealant  
**5mm Specialist drill bit for hard steel**  
Pop rivet gun

## **Installation Guide**

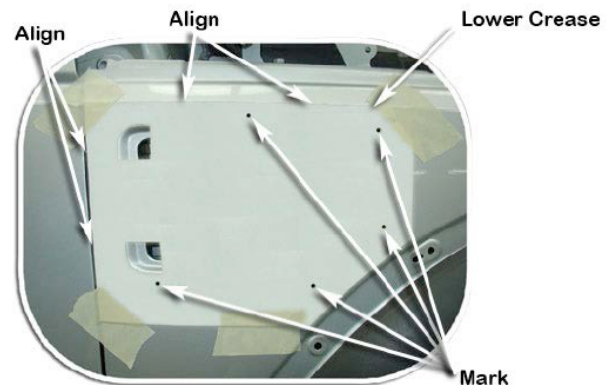
1. Remove the following in accordance with the factory service manual.

- Air cleaner assembly                      - Air intake grille and air ducting
- Right hand wheel arch liner        - 'A' pillar trim

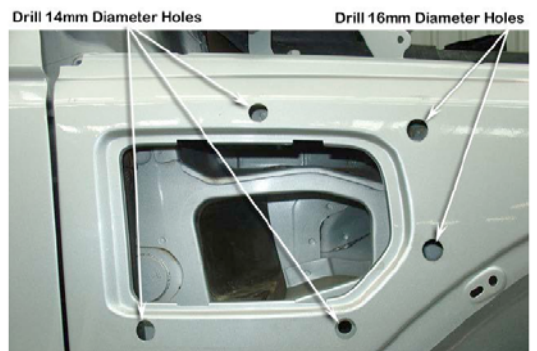
2. Tape the template onto the guard after aligning the top edge of the template along the lower crease and the rear edge of the guard, using the two cut-outs of the template as a guide.

Using a felt tip pen, mark all of the hole positions and remove the template.

Drill a pilot hole for each marked hole positions.

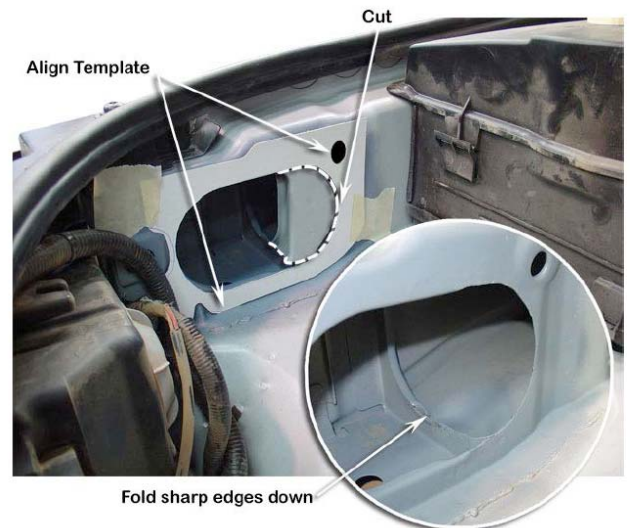


3. Using the step drill, drill the 2 lower and the top centre holes to 14 mm.  
Drill the 2 front holes to 16mm.  
Deburr and paint holes.



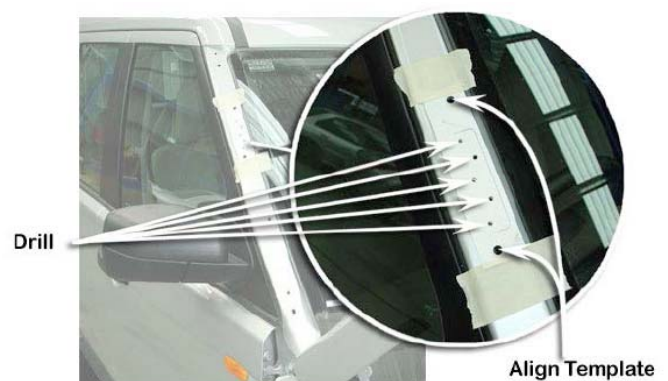
Bearthmach Limited, Bearmach House,  
Unit 8, Pantglas Industrial Estate,  
Bedwas, Caerphilly, CF83 8GE  
t: +44 (0)29 20 856 550  
f: +44 (0)29 20 865 586  
w: www.bearthmach.com

4. Tape the inner guard template (Item No. 17) into position, aligning the template with the standard air intake hole. Using a felt tip pen, mark the section of panel that is required to be removed. Remove the template and with an air hacksaw, cut away the marked section of inner guard panel. Fold down any sharp edges, deburr and paint all surfaces.



5. Tape the mounting bracket template (Item No. 18) into position, aligning the template up with the 3<sup>rd</sup> and 4<sup>th</sup> holes from the top of the 'A' pillar.

Using a felt tip pen, mark all mounting bracket hole positions and remove template. Using a specialist drill bit for hard steel at the recommended drill speed, drill the 5 marked hole positions to 5mm diameter.



6. Apply Sikaflex adhesive sealant to the upper mounting bracket surface.

Apply Sikaflex adhesive sealant to the underside of the pop-rivets (Item No.5) and secure the mounting bracket to the 'A' pillar.



Bearthmach Limited, Bearmach House,  
Unit 8, Pantglas Industrial Estate,  
Bedwas, Caerphilly, CF83 8GE  
t: +44 (0)29 20 856 550  
f: +44 (0)29 20 865 586  
w: [www.bearthmach.com](http://www.bearthmach.com)

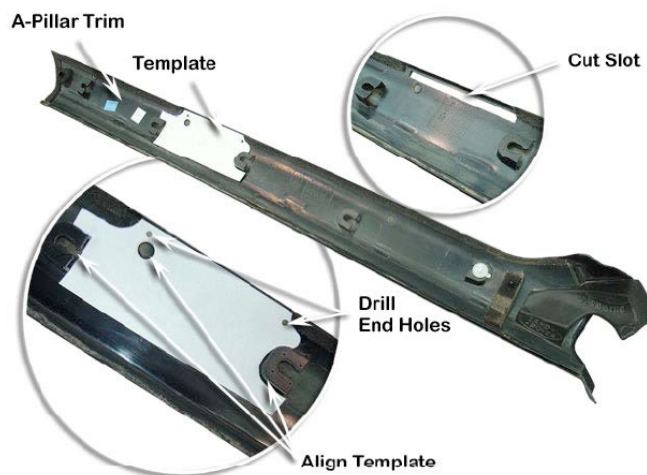
7. Tape the 'A' pillar trim template into position on the underside of the 'A' pillar plastic trim (note: cut away the foam edging from the plastic trim to insert the template).

Mark the 2 hole positions on the 'A' pillar plastic trim and remove the template.

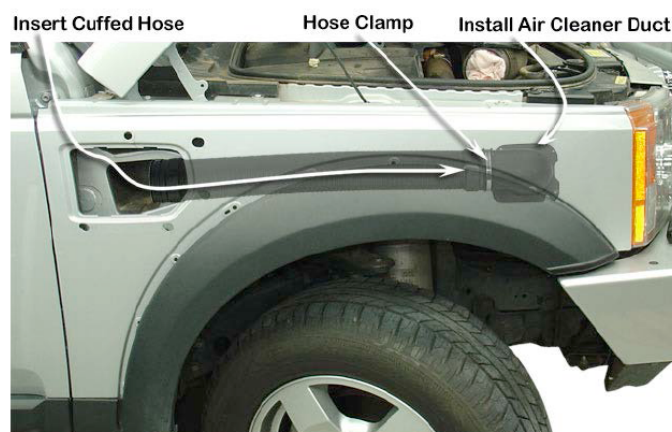
Drill the 2 marked hole positions to 6mm and mark a straight line either side of the holes. Using the air hacksaw, cut the required slot in the 'A' pillar plastic trim.

Note: cut the outer side of the trim first then the inner side to prevent the trim from cracking. Using a file, smooth up the slot.

8. Re-fit the 'A' pillar trim, checking the clearance to the mounting bracket. If required, Remove 'A' pillar trim and file the slot larger where need to achieve clearance.



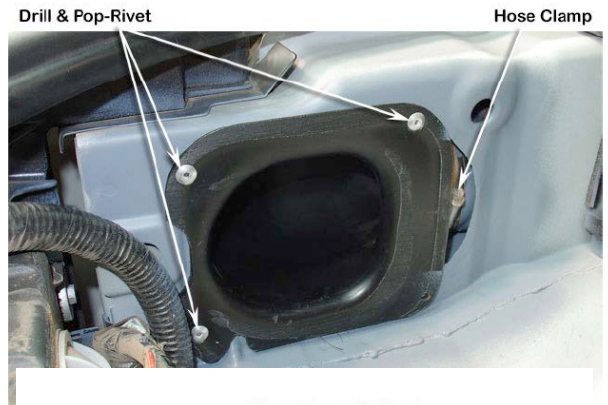
9. Install the cuffed hose through the main hole in the guard, rotating the cuffed hose whilst feeding through the internal cavity. Feed the cuffed hose right up to the hole in the inner guard. Position the hose clamp onto the end of the cuffed hose, install the connecting duct into the cuffed hose, with the connecting duct and cuffed hose correctly positioned, fasten the hose clamp.



Bearthmach Limited, Bearmach House,  
Unit 8, Pantglas Industrial Estate,  
Bedwas, Caerphilly, CF83 8GE  
t: +44 (0)29 20 856 550  
f: +44 (0)29 20 865 586  
w: [www.bearthmach.com](http://www.bearthmach.com)



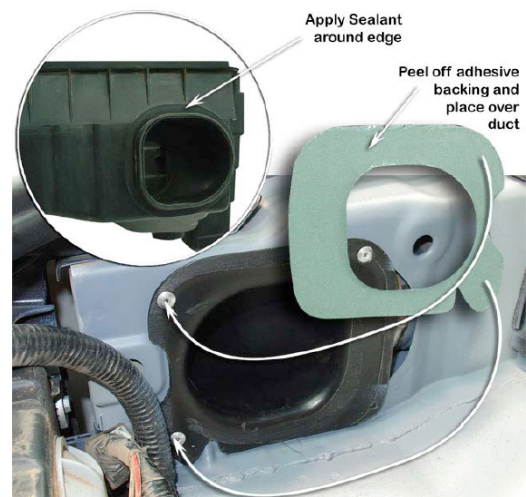
10. Drill the 3 connecting duct mounting hole positions to 5mm and secure the connecting duct to the inner guard panel using pop rivets (Item no. 5).
11. Install the 3 x 6mm studs and 2 x 8mm studs into the snorkel body inserts. Position the hose clamp onto the cuffed hose and carefully install the snorkel body onto the guard, guiding the snorkel body snout into the cuffed hose. With the snorkel body correctly positioned onto the guard, fasten the snorkel body to guard and upper mounting bracket using necessary hardware. With the cuffed hose correctly positioned onto the snorkel body snout, fasten the hose clamp.



12. With the snorkel body correctly secured to the guard and upper mounting bracket, check the clearance of the snorkel body relative to the bonnet in the open and closed position, if required re-align the snorkel body of the guard to achieve adequate clearance.

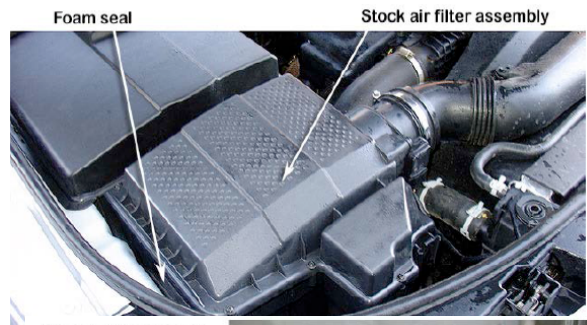
13. Remove the self-adhesive backing from the foam seal (Item No. 15) and secure to the connecting duct.
- Apply a liberal amount of Sikaflex adhesive sealant to the inside of the connecting duct and around the intake snout and flange of the air filter housing, to ensure a watertight connection is achieved.

Carefully re-install the air filter housing into position, ensuring all surfaces seal together correctly.



Bearmach Limited, Bearmach House,  
Unit 8, Pantglas Industrial Estate,  
Bedwas, Caerphilly, CF83 8GE  
t: +44 (0)29 20 856 550  
f: +44 (0)29 20 865 586  
w: [www.bearmach.com](http://www.bearmach.com)

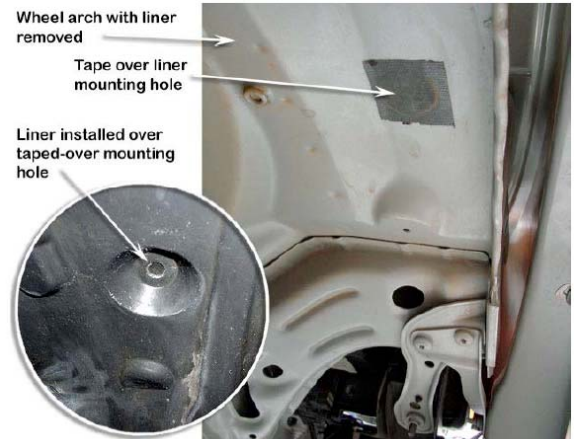
14. Carefully re-fit the air filter element and air filter lid, ensuring not to disturb the sealed connection of the air intake.



15. Place a piece of strong adhesive tape over the centre mounting hole position of the wheel arch liner in the body, blanking off the hole.

Re-install the wheel arch liner.

**Do not install the centre plastic retaining clip of the wheel arch liner.**



16. Install air ram assembly to the snorkel body and fasten hose clamp.



Bearthmach Limited, Bearmach House,  
Unit 8, Pantglas Industrial Estate,  
Bedwas, Caerphilly, CF83 8GE  
t: +44 (0)29 20 856 550  
f: +44 (0)29 20 865 586  
w: [www.bearthmach.com](http://www.bearthmach.com)